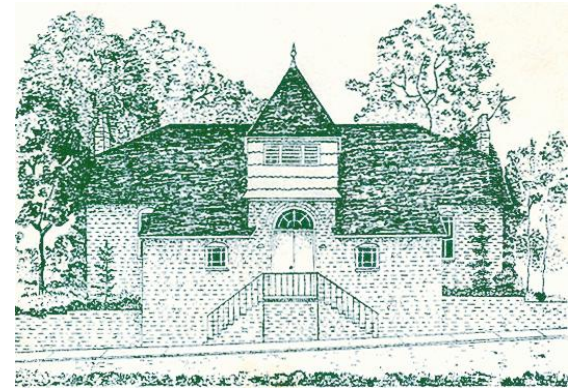




The Woman's Club Of Glyndon Newsletter



Judy Beck, President 410-526-3353

October 2011

Wednesday, November 2nd at Noon–The speaker for the program is Kathleen Curry, Executive Director, Program Development and Outreach for Alzheimer's and Dementia Care at Copper Ridge Institute. Hostesses are as follows: Kathy Levin – chairman, Martha Healy, Jane Hillyard, Kathi Howard, Donna Kaplan, and Virginia Smart.

Important Dates

- October 12**
Book Club Meeting
Norma Allman's Home
- November 2**
10:30 Board of Directors
12:00 – General Meeting
- November 8**
Tea at Two
Clubhouse
- November 9**
Book Club Meeting
Lynne Maher's Home
- November 15**
MFWC Meeting
Frederick, Md
- November 20**
Ribbon Cutting
Clubhouse
2 pm
- December 14**
Charity Tea
Clubhouse
11:30 am



Message from the President

October has been a very busy month for the club. We were not only trying to complete the ramp project, but we were also starting our fall fundraising. The first week of October involved the Boscov's coupon sale, the October general meeting, the Baltimore District meeting, the preparation for the yard sale and the yard sale on October 8. Everything seemed to happen at once. We know the schedule was difficult, but we appreciated your devoted support of all these activities.

Coming up in November will be our Hutzler's memories program, "Tea at Two" on November 8, 2011 (details in this newsletter). Get your friends together, find your hat and gloves and make plans to join us for this special day. We'll even have extra hats available for anyone who wants one.

Our ramp project is moving along, but we have postponed the ribbon cutting ceremony to Sunday, November 20 to give us time to get the interior painted and the clubhouse put back together. Please plan to join us for that celebration.

Have a beautiful fall.

Judy Beck



ROG

Notes from meetings on Sept. 12 and Oct.3:
>*Northwest Substation* presentation by Rob Gould from BGE: A high voltage substation in the Reisterstown area is necessary to forestall reliability challenges which are projected with the existing facilities serving northwest Baltimore County. The installation requires at least 40 acres. The primary site is off Kemp Rd. An alternative site north of Glyndon Gardens off Hanover Rd., suggested by Valley Planning Council and other community organizations, involves 5 parcels of land. The sale of these is being pursued.

>*Howard County Executive*, Ken Ulman, is the president of Maryland Association of Counties and spoke about the importance of strong and active community organizations in counties (like Howard and Baltimore) where there are no incorporated cities.

>*CHAI* (Comprehensive Housing Assistance, Inc.) is the most recent organization to join ROG. Its mission is to support thriving, stable communities in neighborhoods with a substantial Jewish population. A new initiative is to increase involvement with neighborhood associations in Pikesville and Owings Mills while maintaining a commitment to northwest Baltimore City.

>*Reisterstown Improvement Association* has received 501c3 status.

>Baltimore County Police non-emergency phone 410-887-2222.

>*Fun Day for All Ages*: October 29, 10-3, at Reisterstown Senior Center. Admission is FREE.

Bookclub News

Book Club meeting on Wednesday November 9th at the home of Lynne Maher to discuss *Saving CeeCee Honeycutt* by Beth Hoffman. Carol Moore is the facilitator, and we will begin at 10 am. -Sue Shriver



Project Linus

Once again, the Project Linus Committee will hold a sale of quilted items at the November meeting. The proceeds will go toward the purchase of fabric and batting used in the construction of Project Linus quilts. Among the items for sale will be placemats, table runners, table toppers, aprons, pillowcases and children's coloring book bags.

The Carroll County Project Linus Chapter to which we donate our quilts has a commitment to local hospitals and children's agencies to deliver 618 blankets each month. Unfortunately, they have been unable to meet that commitment any month in 2011. Every quilt we make is needed.

For more information or to join us in sewing quilts, call Carole Smolinski (410-833-2609) or email: smol01@verizon.net.

Charity Tea

Wednesday, December 14
11:30 am

At
Our Clubhouse
\$12.00 per person

Make your reservations now!
Call Lynne Maher 410-833-1314
Or

Buy your tickets at the November meeting.

MFWC Meeting

The next MFWC Meeting will be held at Dutch's Daughter Restaurant in Frederick, MD on November 15, 2011. Lunch is \$26.00. Please contact Judy Beck if you are interested in attending.

HELP NEEDED!!!

Kitchen help needed for the Tea at Two on November 8. Please call Patti Schunk if you are able to help.
410-239-7585

Capital Campaign Update

Below is the status of our campaign as of October 10th:

Donations from 33 Members: \$10,870
Donations from 24 Non-Members: \$2,557

Subtotal: \$13,427

Plus funds from the School House
Preservation Account: \$9,000

Total: \$22,427

The ribbon cutting ceremony has been re-scheduled for Sunday, November 20th, 2 to 4 pm.

November Birthdays!

Donna Kaplan	1
Barbara Weldon	1
Sally Thompson	12
Carolyn Workman	14
Sandra Philip	20



Ways and Means

Tea at Two on Tuesday, November 8th is our newest, exciting event for this Fall! (See attached flyer.)

Michael Lisicky, author of *"HUTZLER'S: Where Baltimore Shops"* will be with us to share his book and his memories of that wonderful era! You may purchase his book and he will be happy to autograph it. *Tea at Two* will be held at our clubhouse at 2 pm (doors will open at 1:30). Tea and sweets will be served! You may purchase tickets from Carol Parker (410-833-1703), Patti Schunk (410-239-7585) or Jane Hillyard (410-833-9586). Tickets are going quickly so call Carol, Patti or Jane and buy yours now!

Don't forget to wear your hat and gloves!!

We are still taking orders for *Virginia Diner*, an always popular fundraiser full of yummy nuts and candy! You may place your order any time up until the November meeting. As in the past, your support will be greatly appreciated! And we're sure your family and friends will love the candy and nuts! Give Kathi Howard a call at 410-526-7574 to place your order or for a brochure. Our club will receive 50% of all orders placed!

Ways and Means, continued...

Martha & Mary's Restaurant fundraiser was held on Thursday, September 22nd, and what a great day it was! With support from so many of our wonderful ladies and the Reisterstown community, we received a check for \$426! Think maybe we'll do it again next Spring!

Our participation in *Friends Helping Friends through Boscov's* was another successful day on October 4th. Thank you to all who "manned" the table in front of Boscov's and sold the coupons. Because of your enthusiasm and energy, we made \$425 -- over \$100 more than last year! And what a great day of shopping and seeing friends as well! Thanks, Kathi, for your hard work!

Back by popular demand is the *Antrim Dinner Raffle!* This event was such a hit last year that we decided to go with it again this year! Each member of our Club has been given 3 tickets to sell (\$10 each or 3 for \$25). The drawing for the Antrim Dinner for two (valued at just over \$200 -- including a \$40 bottle of wine) will be held at the Charity Tea on Wednesday, December 14th. Tickets were passed out at our September meeting. If you need more, please call Jane Hillyard (410-833-9586) or Kathi Howard (410-526-7574). Last year a friend of Evelyn Taylor was the winner. Maybe YOU will be the lucky winner this year!

Our *Annual Fall Yard Sale* was held this year on Saturday, October 8th, at Mary Carole Lehukey's -- a perfect location for a yard sale! It was wonderful to see so many of you there helping Mary Carole or just shopping. A final figure is not available but we made somewhere between \$500-\$600! A job well done, Mary Carole, and lots of hard work! Thank you! Thank you!

Jane Hillyard

Recipe Corner

This is the recipe for the delicious Quiches that were served at the October Luncheon.

Swiss/Cheddar Quiches

Prep Time- 25 Minutes – Ready in 1 hour

Ingredients:

1 Box (15 Oz) Pillsbury Refrigerated pie crusts, softened as directed on box

1-1/2 cups shredded Swiss/Cheddar Cheese (6 Oz)

2 Tablespoons sliced green onion (2 Medium)

1 Tablespoon diced pimento

2 Eggs

1/2 cup milk

¼ teaspoon salt

Heat oven to 375. Spray muffin cups with cooking spray. Place pie crust flat on work surface. With a glass or cookie cutter, cut out rounds to fit in muffin cups. For Mini Quiches this would be a 2-1/2' round cutter. If making quiches for cupcake cups you will need a bigger cutter depending on the size of your cupcake cup. (3"-4")

Place 1 tablespoon cheese in each pie crust-lined cup. Top each with a few onions and pimiento pieces. You can also put in bacon bits or spinach.

In 2-cup measuring cup, beat eggs, milk, and salt with a fork until well blended. Pour mixture into cups, filling each to within ¼ inch of top.

Bake 25-30 minutes or until golden brown. Cool 2 - 3 minutes; Lift quiches from cups with tip of knife. Serve warm.

Note: This recipe is for Mini Quiches we made them bigger using a cupcake tin. If you are using the cupcake tin you will need to double the recipe. (12 cupcake size quiches)

A few funnies to give you a laugh...

Law of the Result - When you try to prove to someone that a machine won't work, it will.

Law of Physical Surfaces - The chances of an open-faced jelly sandwich landing face down on a floor, are directly correlated to the newness and cost of the carpet or rug.

Wilson's Law of Commercial Marketing Strategy - As soon as you find a product that you really like, they will stop making it.

The Coffee Law - As soon as you sit down to a cup of hot coffee, someone will ask you to do something which will last until the coffee is cold.

Law of Random Numbers - If you dial a wrong number, you never get a busy signal and someone always answers.